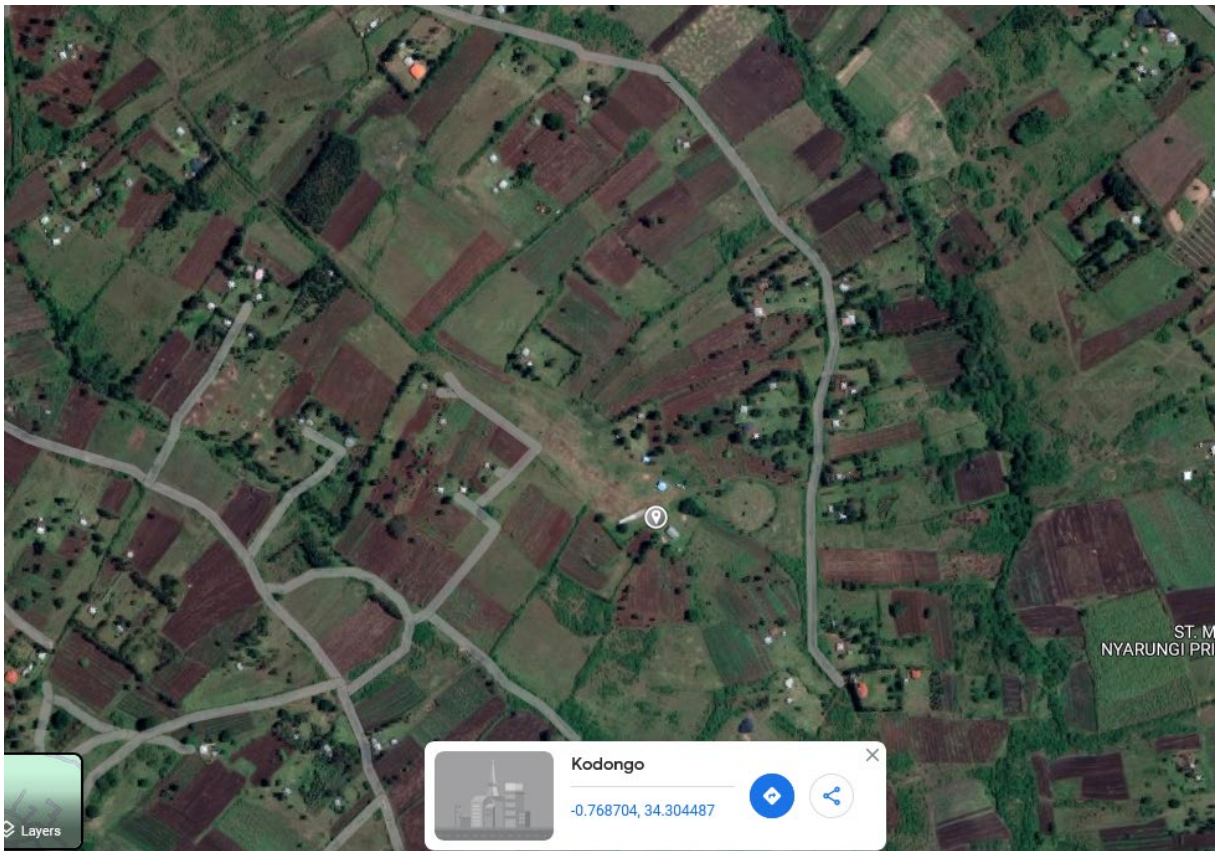


## **Kodida Primary School Needs Report**



**BRIEF DESCRIPTION OF THE SCHOOL** – Kodida primary school is a public primary school, established in 2013 as a community learning center by the residents Kodida village,, North Kodondo sublocation, Kodondo location,Ndiwa sub county of Homabay county in Kenya..The area is generally dry and the schools are sparsely distributed. The school's population comes from as far as 6Kms away. The children are forced to carry dirty water from seasonal rivers and earth pond to school.

**ADDRESS OF THE SCHOOL** – P.O. Box 174 – 40302, Ndiwa



GPS , -0.7685505331915526, 34.304299445003686

**DIRECTIONS TO THE SCHOOL** – Take Kisumu – Sori road via Homabay town, take a right turn at Rodi kopany and drive upto Ratanga shopping center. Take a left turn on the rough road and drive 4kms to find Kodida primary school on your right.

**NEIGHBOURING SCHOOLS –**

1. Nyarongi primary school
2. Ruga primary school.

SCHOOL MANAGEMENT	NAME	CONTACT
Head Teacher	Mrs. Florence Ogalo	0727655620
Board of Management	Mr George Oguta	

**TOTAL NUMBER OF PUPILS IN THE SCHOOLS** - Total No of Pupils =409

Primary Girls 162, Primary Boys 145 plus Early Childhood Development, 102.

**THE NUMBER OF TEACHERS AT THE SCHOOL** – 12 (Primary section – 9 and ECD – 3)

**ACREAGE OF THE SCHOOL** – 6 Acres.



ABSENTEEISM RATE IN THE SCHOOL NUMBER OF DAYS LOST TO ILLNESS – In average 80 children fall sick as at last month That translates to about 19.6%.

PROVISION OF SCHOOL LUNCHES FOR PUPILS – None.

CURRENT WATER SITUATION – The children carry water from earth pond and seasonal river.



Kodida school earth pond.. the current source of water.

HOUSEHOLDS IN THE LOCAL COMMUNITY – 150 homes of 6 people in average.

COMMON KINDS OF DISEASES? – Typhoid, Amoeba, dysentery, and Malaria.

ACADEMIC PERFORMANCE OF THE SCHOOL – 249.66 marks

HOW WILL THE COMMUNITY PAY FOR BOREHOLE MAINTENANCE?

There will be an established Water Committee to run and find ways of funding the maintenance of the well.